



THE LUXURY TRAVELLING LOO COMPANY

MODUVAC® Vacuum Loo System Mali Wenge



- The Mali Wenge MODUVAC® is a sturdy, modular system clad in stunning, contemporary wood grain laminated panels.
- The hand basin units are available with three square ceramic basins mounted on hard wearing corian vanity tops using sensor taps. A single large mirror complements each unit with soft, spot lighting. Chrome upstands enhance the sleek effect.
- Back lit urinals and cubicles using LED strip lighting coupled with additional spot lights create relaxed moods.
- The floors in both the urinal and cubicle areas are thoughtfully covered in a durable, waterproof, woven vinyl.
- The cubicles are fitted with white vacuum loo pans as standard. All modules are connected to vacuum waste tanks positioned outside a temporary structure. However, a fresh water flush conversion is an option, particularly for longer term hire, with the waste managed directly into mains drainage on-site.

The modular system comprises various components that may be mixed and matched to suit each event's individual aspects such as quantity of guests, proportion of ladies/gentlemen and nature of the event.

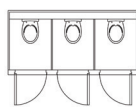
Requirements for Operation

- The MODUVAC® loos need to be installed inside a structure which you must floor, carpet, line and create baffle entrances.
- Equipment is delivered on an articulated lorry so access should be ensured for the vehicle and forklift access into structure.
- Constant power supply is required for installation and during the event, quantity varies according to the level of stock.
- Constant fresh water supply with good pressure for installation and during the event. The fresh water is necessary for both the hand basins and loo pans.

Accessories

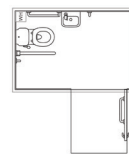
- Consumables – Scottish Fine Soaps and Hand Lotion, loo paper and paper hand towels are supplied as standard. Cotton hand towels and vanity baskets (facial tissues, tights, hair grips, body spray etc.) can be provided at the client's request.

Module Layouts



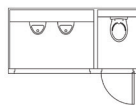
CUBICLE MODULE
3 cubicles

Measures:
8' (2.44 m) length
4' (1.22 m) width
7'7" (2.31 m) high



DISABLED MODULE
1 cubicle, 1 hand basin

Measures:
7'6" (2.34 m) length
5'2" (1.55 m) width
7'5" (2.30 m) high



1 CUBICLE, 2 URINALS MODULE
1 cubicle, 2 urinals

Measures:
8' (2.44 m) length
4' (1.22 m) width
7'7" (2.31 m) high



HAND BASIN MODULE
3 hand basins

Measures:
8' (2.44 m) length
2' (0.61 m) width
7'4" (2.24 m) high

...beautiful loos ...beautiful events



THE LUXURY TRAVELLING LOO COMPANY

MODUVAC® Vacuum Loo System Mali Wenge



...beautiful loos ...beautiful events

Email: 4u2p@igloos.co.uk

www.igloos.co.uk

MV03v2